

NT-CeramTM

hydroxyapatite(90%)+ β -TCP(10%) Synthetic bone graft



Suitable for High Tibia Osteotomy

Advantages

- ▶ NO immune rejection response
- ▶ High Stability
- ▶ Best structure for rapid osteanagenesis
- ▶ Wedge shape designed for easily insertion

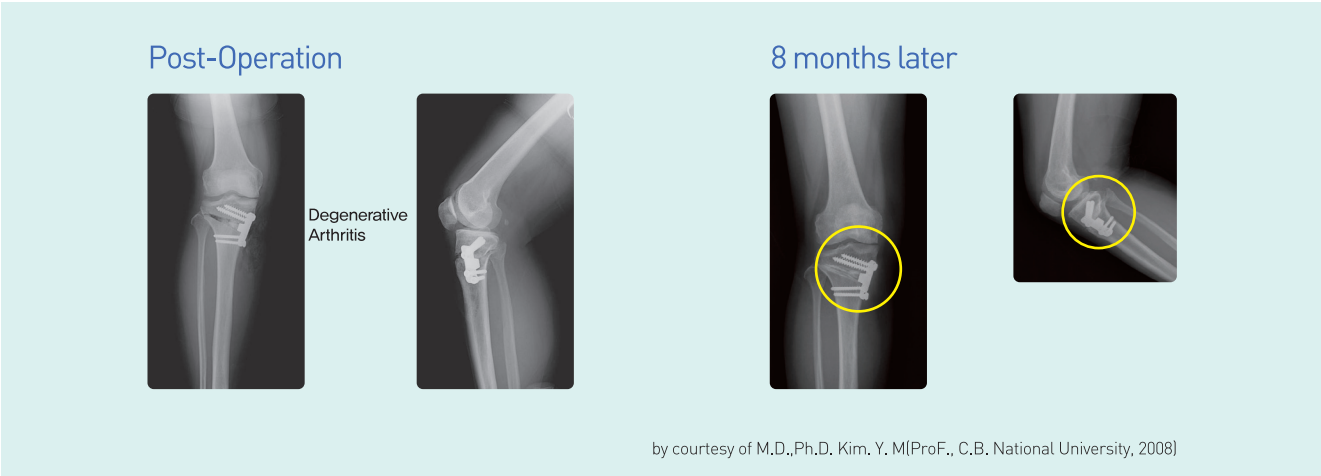
manufactured by



distributed by



wonyang BD. 401, 308-4, Jangan 2-dong, Dongdaemun-gu, Seoul, Korea
Tel: 02-2216-1797, Fax: 02-2216-1796



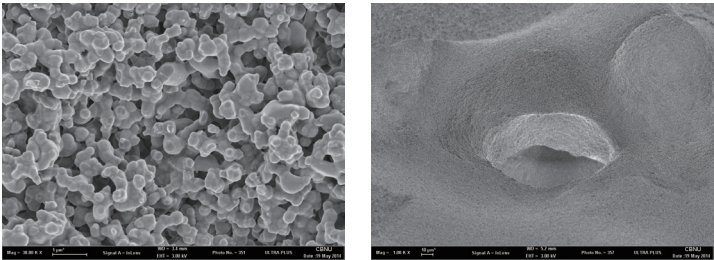
Y00.(F/49)
Knee joint degenerative arthritis High tibial osteotomy

Main ingredients of NT-Ceram Spacer

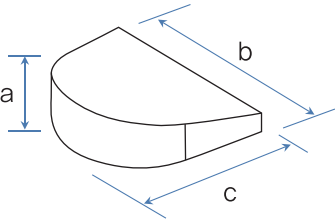
NT-Ceram Spacer has been made through the synthesis of highly pure inorganic material using Hydroxyapatite (90%) and β -TCP(10%) as main ingredients.
It can achieve rapid osseointegration with human bone.
In addition, as it consists of human body-friendly and proven inorganic matters, it dose not cause any immunorejection and has no risk of transmitting contagious disease.

Dual Structure of NT-Ceram Spacer

NT-Ceram has dual structures, porous and compact structures as that of human bone.
[porosity 70%]
This dual structure resembles the structures of cortical and cancellous bones in human thus it can maintain strength and provide optimum space for osseointegration.



Demension



Model No.	Order No.	Porosity(%)	Rated Size(mm)			Package	Volume(cc)
			a	b	c		
W-735	BNT-W735	60	7	35	25	1PC	3.1
W-1035	BNT-W1035		10	35	25		4.5
W-1335	BNT-W1335		13	35	25		5.8
W-745	BNT-W745		7	45	35		5.7
W-1045	BNT-W1045		10	45	35		8.0
W-1345	BNT-W1345		13	45	35		10.5